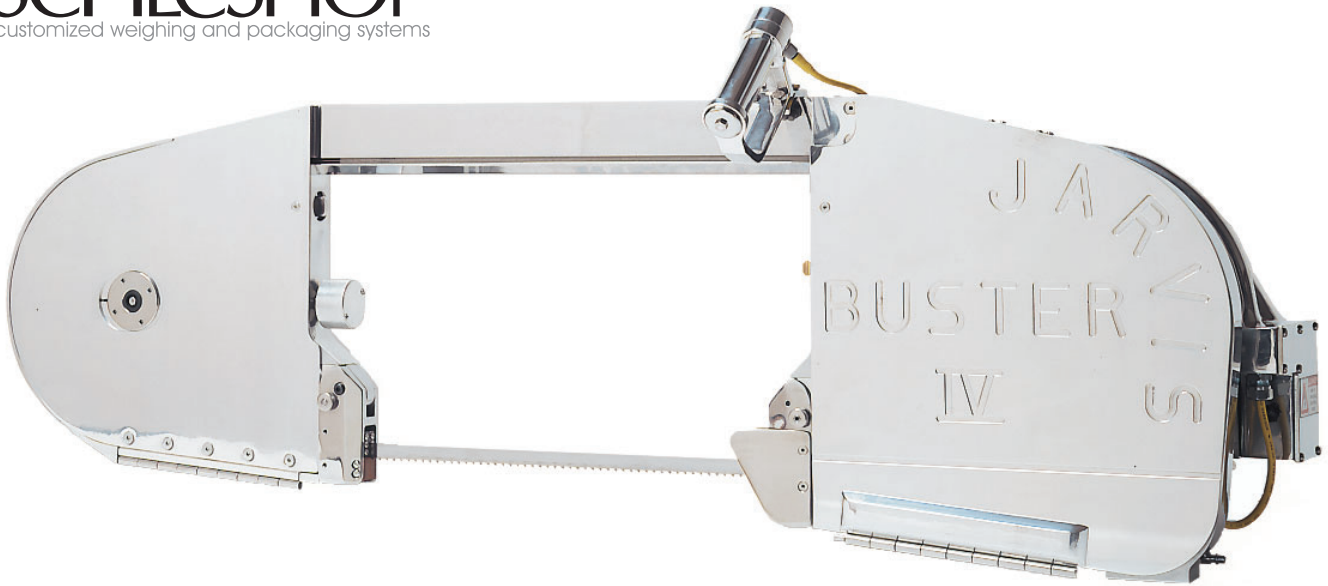


CARCASS SPLITTING BANDSAW

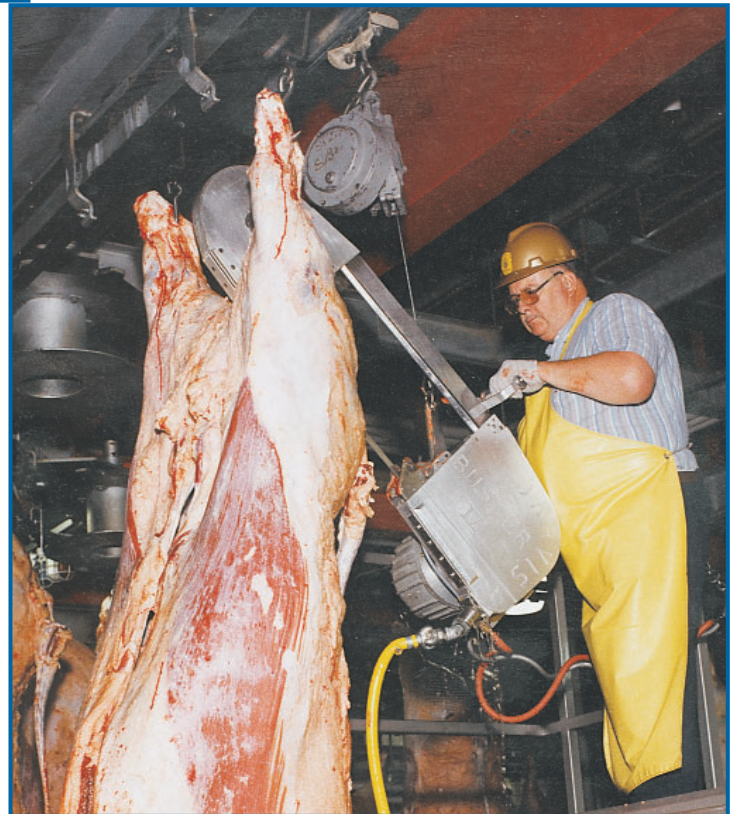
Model Buster IV



The Jarvis Model Buster IV - electrically powered bandsaw for splitting cattle, pigs and sows.

JARVIS

- Used in all major U.S. plants for splitting fat cattle (800 - 1050 lbs / 360 - 480 kg).
- Smaller and better handling for optimum performance in the most demanding applications (up to 180 beef / hour / saw).
- Superior blade life: 400 - 600 carcasses per blade.
- Best possible hygiene - spoked wheels, flat surfaced housings and completely opening doors - for fast, easy and complete cleaning.
- The drive system is oil bath lubricated for sustained trouble-free operation.
- Designed for the operator - ultra-thin rail for unobstructed vision and dual rear handles for comfort.
- Anti-tie down controls and totally enclosed electric motor for operator safety.
- Meets national and international requirements for hygiene and safety.



THE BUSTER SAW - HIGH PERFORMANCE CARCASS SPLITTING

CARCASS SPLITTING BANDSAW

Model Buster IV

Specifications

Drive	Electric	
Model Buster IV		
Motor Power	3.3 hp	2500 W
Operating Voltage	460 / 230 V, 3 phase, 60 Hz other voltages and 50 Hz available	
Capacity	180 head / hour	
Control Handles	Electric Dual Anti-tie Down	
		12 V
Distance between Guides	17.75 in	451 mm
Blade Length	119.0 in	3023 mm
Overall Length	54 in	1372 mm
Drive Wheel Speed	620 rpm	
Weight	190 lbs	86 kg

Equipment Selection and Accessories

Order Number

Model Buster IV	460 / 230 V, 3 phase, 60 Hz*	4006030
	380 / 220 V, 3 phase, 50 Hz	4006032
Standard Blade (119 inches)		1023101
Cut Tooth Blade (119 inches)		1023339
JET Blade (119 inches)		1023619
Spring Balancer		4042038
Air Balancer	4 feet (1.2 m) overall length	4042016
	10 feet (3.1 m) overall length	4042020

* For other configurations: please specify voltage, hertz and intended country of operation when ordering.



www.thescaleshop.net

1-888-844-2031