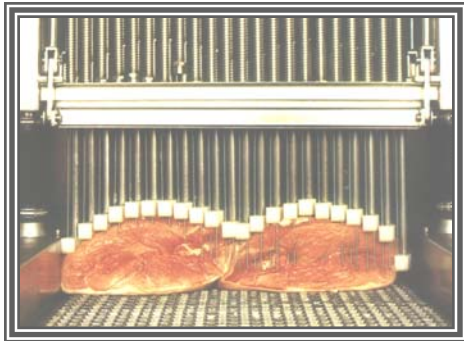




 **Efficient Brine System**



 **Easy Maintenance**

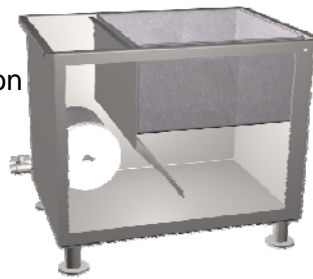
Model SPI 26/52 shown

INJECTORS



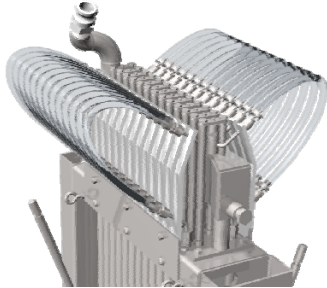


- Easy to remove conveyor
- Stainless steel construction
- Stainless steel mesh belt
- Stainless steel pump



- Triple stage filtering
- Integrated baffle

BUILT FOR LIFE



- Only-in-product injection
- Injection during up and down movement
- Brine cut off valves for every needle
- Spring loaded needles for bone-in product
- Head and conveyor speed automatic synchronizing
- Pressure equalizing accumulator



- User friendly
- 20 programs
- Diagnostic

		Model SPI 26/52-104	Model SPI 44/88-176	Model 54/108-216
Overall size (LxWxH)	mm:	2096 x 597 x 2121	2299 x 876 x 2426	2299 x 1003 x 2426
	in:	82.5" x 23.5" x 83.5"	90.5" x 34.5" x 95.5"	90.5" x 39.5" x 95.5"
Max. product width:	mm:	350	629	756
	in:	13.75"	24.75"	29.75"
Max. product height:	mm:	216	216	216
	in:	8.5"	8.5"	8.5"
<i>Drive specifications:</i>				
Needle bridge motor:		1.5 kW	1.5 kW	1.5 kW
<i>Working capacities:</i>				
Needle bridge		10-60 stokes per min.	10-60 stokes per min.	10-60 stokes per min.
Conveyor speed:		Variable speed on all models (start/stop servo drive optionnal for delicate product)		
Pump:		2 kW Centrifugal pump 65 L/min @ 43 PSI	1.5 kW Lobe pump	2 kW Lobe pump
<i>Estimated production rates:</i>				
Boneless Ham		4500 kg/hr @ 25% pump	9100 kg/hr @ 25% pump	11000 kg/hr @ 20% pump
		1800 kg/hr @ 40% pump	4500 kg/hr @ 35% pump	5400 kg/hr @ 35% pump
Bacon		2400 kg/hr @ 10% pump	4900 kg/hr @ 10% pump	5900 kg/hr @ 10% pump
		1100 kg/hr @ 20% pump	3900 kg/hr @ 12% pump	4600 kg/hr @ 12% pump

Sipromac reserves the right to make technical changes without notification



www.thescaleshop.net

1-888-844-2031