



PROFESSIONAL GRADE
PREMIUM QUALITY STAINLESS



Table of Contents

Boning Knives	1	Paring Knives	5
Seafood Knives	1	Specialty Knives	5
Cook Knives	2	Forged Knives	6
Cleavers	2	Sharpening Steels	6
Slicers / Carving Knives	3	Poultry Knives	6
Breaking Knives	3	Retail Knife Sets	7-8
Steak Knives	4	Knife Storage	9-10
Butcher Knives	4	Knife Sanitizer	10
Cut-Off Knives	4	Knife Sharpening Products	10-12
		Knife Accessories	12-13

www.thescaleshop.net

1-888-844-2031

BONING KNIVES



11637

11637 | 6" Straight blade boning knife , 120 pc./box approx.



11824

11824 | 6" Straight blade, granton edge, 120 pc./box approx.



11471

11471 | 6" "N" style, straight blade, wood handle, 120 pc./box approx.



11443

11443 | 6" 300 series, straight blade, 120 pc./box approx.



11563

11563 | 6" "DR" handle, straight blade, 120 pc./box approx.



12844

12844 | 6" V" style handle, superior stainless steel, 120 pc./box approx.

VICTORYUSA
SUPER FIBER



11758

11758 | 6" Curved blade, 120 pc./box approx.

11814 | 6" Curved blade, flexible, 120 pc./box approx.



11564

11564 | 6" DR handle, curved blade, 120 pc./box approx.



11819

11819 | 6" Curved blade, granton edge, 120 pc./box approx.



11474

11474 | 6" N-style, curved, wood handle, 120 pc./box approx.



11772

11772 | 6" Curved blade, Victory USA

VICTORYUSA
SUPER FIBER

SEAFOOD KNIVES



11600



12755



17042



11523



12750



11834



11593

11523 | 3 3/4" Oyster knife, 120 pc./box approx.

12750 | 3 1/2" Clam knife, 250 pc./box approx.

11600 | 12" Fish splitter, DR handle, 24 pc./box approx.

12755 | 12 1/2" Fish splitter, 24 pc./box approx.

17042 | 12 1/2" Fish splitter, wooden handle, 24 pc./box approx.

11834 | 8" Fillet knife, straight blade, 60 pc./box approx.

11854 | 8" Fillet knife, straight blade, light guage, 60 pc./box approx.

11593 | 8" Fillet knife, DR handle, 60 pc./box approx.

COOK KNIVES



11457

- 11451** | 8" Medium blade, 300 series, 60 pc./box approx.
- 11457** | 10" Medium blade, 300 series, 60 pc./box approx.



11881

- 11881** | 10" Wide blade, 60 pc./box approx.



12861

- 12861** | 10" Medium cook, Victory USA, 60 pc./box approx.

VICTORYUSA
SUPER FIBER



12074

- 12062** | 6" Regular cook knife, 60 pc./box approx.
- 11973** | 8" Regular cook knife, 60 pc./box approx.
- 12028** | 8" Regular cook knife, light gauge, 60 pc./box approx.
- 12074** | 10" Medium blade, 60 pc./box approx.
- 12152** | 10" Medium blade, light gauge, 60 pc./box approx.
- 12044** | 12" Regular blade cook knife, 60 pc./box approx.



11479

- 11479** | 8" Medium blade, wood handle, 60 pc./box approx.
- 11477** | 10" Medium blade, wood handle, 60 pc./box approx.
- 11478** | 12" Medium blade, wood handle, 60 pc./box approx.

CLEAVERS



10548

- 10548** | 6" Cleaver, 24 pc./box approx.
- 10549** | 7" Cleaver, 24 pc./box approx.



10550

- 10550** | 8" Cleaver, 12 pc./box approx.
- 10551** | 9" Cleaver, 12 pc./box approx.
- 10546** | 10" Cleaver, 12 pc./box approx.



10560

- 10558** | 6" Cleaver, wood handle, 24 pc./box approx.
- 10559** | 7" Cleaver, wood handle, 24 pc./box approx.
- 10560** | 8" Cleaver, wood handle, 12 pc./box approx.
- 10561** | 9" Cleaver, wood handle, 12 pc./box approx.



10554

- 10554** | 8.5" Chinese Style cleaver, stainless steel handle, 12 pc./box approx.
- 10555** | # 2 Chinese cleaver, stainless steel handle, 12 pc./box approx.



10552

- 10552** | 8.5" Chinese Style, cleaver, plastic handle, 48 pc./box approx.



10557

- 10557** | 8" Chinese Style, cleaver, premium wood handle, 48 pc./box approx.
- 10556** | 8.5" Chinese Style, cleaver, wood handle, 48 pc./box approx.



10547

- 10547** | 7 1/4" Japanese cleaver, wood handle, 60 pc./box approx.

SLICERS / CARVING KNIVES



12480

- 12480** | 10" Straight, 60 pc./box approx.
- 12524** | 12" Straight, 60 pc./box approx.
- 12562** | 12" Straight, light guage, 60 pc./box approx.
- 12573** | 14" Straight, 60 pc./box approx.



11465

- 11465** | 10" Straight wave slicer, no logo, 120 pc./box approx.



12644

- 12644** | 10" Straight wave edge, 120 pc./box approx.
- 12696** | 12" Straight wave edge, 120 pc./box approx.



12713

- 12713** | 12" Straight, granton edge, 60 pc./box approx.
- 12727** | 14" Straight, granton edge, 60 pc./box approx.



12821

- 12821** | 10" Curved, narrow wave edge, 60 pc./box approx.



12452

- 12452** | 10" Curved, wave edge, black, 60 pc./box approx.



12738

- 12603** | 8" Narrow blade, R-wave, 120 pc./box approx.
- 12738** | 10" Narrow blade, R-wave, 120 pc./box approx.



12427

- 12427** | 9" Off-set, wave edge, 120 pc./box approx.



11511

- 11511** | 12" Straight wood handle, 60 pc./box approx.
- 11509** | 14" Straight wood handle, 60 pc./box approx.



11573

- 11573** | 12" Waved edge, DR wood handle, 60 pc./box approx.
- 11572** | 14" Waved edge, DR wood handle, 60 pc./box approx.



11513

- 11513** | 12" Wood handle, granton edge, 60 pc./box approx.
- 11514** | 14" Wood handle, granton edge, 60 pc./box approx.



11512

- 11512** | 8" Narrow blade, wave edge, wood handle, 60 pc./box approx.

BREAKING KNIVES



12307

- 12307** | 8" Breaking knife, 60 pc./box approx.
- 12338** | 10" Breaking knife, 60 pc./box approx.



11570

- 11570** | 8" Breaking knife, DR handle, 60 pc./box approx.
- 11571** | 10" Breaking knife, DR handle, 60 pc./box approx.



12342

- 16856** | 8" Breaking knife, Victory USA, 60 pc./box approx.
- 12342** | 10" Breaking knife, Victory USA, 60 pc./box approx.

VICTORYUSA
SUPER FIBER

STEAK KNIVES



12198

12198 | 10" Steak knife, 60 pc./box approx.

12250 | 12" Steak knife, 60 pc./box approx.



12176

12176 | 10" Granton edge, 60 pc./box approx.

12173 | 12" Granton edge, 60 pc./box approx.



11566

11566 | 10" DR handle, 60 pc./box approx.

11568 | 12" DR handle, 60 pc./box approx.



17042

17042 | 10" 300 Series, 60 pc./box approx.

17043 | 12" 300 Series, 60 pc./box approx.



16855

16855 | 10" Steak knife, Victory USA, 60 pc./box approx.

12866 | 12" Steak knife, Victory USA, 60 pc./box approx.



11467

11467 | 12" Slim blade, 300 Series, 120 pc./box approx.



12182

12182 | 12" Slim blade, 120 pc./box approx.



11481

11481 | 10" Wood handle, 60 pc./box approx.

11482 | 12" Wood handle, 60 pc./box approx.



11567

11567 | 10" Wood handle, DR wood handle, 60 pc./box approx.

11569 | 12" Wood handle, DR wood handle, 60 pc./box approx.

VICTORYUSA
SUPER FIBER

BUTCHER KNIVES

17049



12504 | 10" English Butcher Knife, black, 60 pc./box approx.

12503 | 12" English Butcher Knife, black, 60 pc./box approx.

17049 | 12" English Butcher Knife, cream, 60 pc./box approx.

17050



12505 | 8" English Butcher Knife, granton edge, black, 60 pc./box approx.

12506 | 10" English Butcher Knife, granton edge, black, 60 pc./box approx.

12507 | 11" English Butcher Knife, granton edge, black, 60 pc./box approx.

12508 | 12" English Butcher Knife, granton edge, black, 60 pc./box approx.

12507



17050 | 12" English Butcher Knife, granton edge, cream, 60 pc./box approx.

CUT-OFF KNIVES

11469



11469 | 6" Cut-off knife, C-Handle, 120 pc./box approx.

12372



12372 | 3/4" Lettuce Knife, 250 pc./box approx.

11601



11601 | 4 1/2" Cut-off knife, with guard, 120 pc./box approx.

11609 | 6" Cut-off knife, with guard, 120 pc./box approx.

PARING KNIVES



11528



11483



11493



12405



11502

11528 | 3 1/4" Wave edge paring knife, 500pc./box approx.

11494 | 4" Wave edge paring knife, 500pc./box approx.

11534 | 3 1/4" Paring knife, 500pc./box approx.

11483 | 4" Paring knife, 500pc./box approx.

11493 | 4" Paring knife with wood handle, 500pc./box approx.

12405 | 3 1/4" Hotel style paring knife, 500pc./box approx.

11502 | 3 1/2" Hollow grind paring knife, 250pc./box approx.

SPECIALTY KNIVES



12761

12761 | 7" Multi-purpose knife, granton edge, 100 pc./box approx.



11518

11518 | 14" Cheese knife, double wood handle, 24 pc./box approx.



12742

12742 | 15 1/2" Cheese knife, double handle, 24 pc./box approx.



17046

17046 | 15 1/2" Cheese knife, DR handle, 24 pc./box approx.



11521

11521 | 18" Pizza knife, 24 pc./box approx.



11520

11520 | 16" Pizza knife, 24 pc./box approx.



12746

12746 | Handle for 18" pizza knife



11558

11558 | 20" Pizza rocker, all metal, 12 pc./box approx



12818

12818 | 20" Pizza rocker with black handles, 12 pc./box approx.



12806

12806 | 4" Pizza cutter, R-style, 60 pc./box approx.

12794

12794 | 4" Pizza cutter, 60 pc./box approx.



11515

11515 | 14" Watermelon knife, 60 pc./box approx.



11863

11863 | 6" Skinning knife, 100 pc./box approx.



17038

17038 | 16" Loin slicer, 60 pc./box approx.

FORGED KNIVES



11578



11575



11576



11579



11574



11577

PROFESSIONAL GRADE
PREMIUM QUALITY STAINLESS



11588



11589

11578	9" Forged wave slicer, 1pc./box
11575	8" Forged cook knife, 1pc./box
11576	10" Forged cook knife, 1pc./box
11579	6" Forged meat fork, 1pc./box
11574	6" Forged boning knife, 1pc./box
11577	4 1/2" Forged paring knife, 1pc./box
11588	8" Forged cook knife, premium, Anton 1pc./box
11589	10" Forged cook knife, premium, Anton 1pc./box



POULTRY KNIFE AND SPLITTER



12383



12387

12383	4 3/4" Poultry knife, 250pc./box approx.
12387	12" Poultry splitter, 12-24pc./box approx.

SHARPENING STEELS



13769



13881



13773

Round

13761	10" Steel, premium round
13769	10" Steel, round econo
13762	10" Steel, premium round
13770	12" Steel, round econo
13764	14" Steel, premium round
13772	14" Steel, round econo

Oval

11526	10" Premium steel oval
13881	10" Steel, oval econo
11527	12" Premium steel, oval
13882	12" Steel, oval econo
13874	14" Premium steel, oval
13885	14" Steel, oval econo

Diamond Flat

13773	10" Steel, diamond flat
13774	12" Steel, diamond flat
13775	14" Steel, diamond flat

RETAIL KNIFE SETS



12887

- 12887** 10 pc. Knife Set
Includes the following:
Wooden Knife Block
3 1/2" Hollow grind paring knife
4" Paring knife
4" Wave paring knife
6" Straight boning knife
10" Straight slicer
10" Straight wave slicer
10" Medium cook knife
8" Medium cook knife
10" Round sharpening steel



Full Tang Knife Set with Wood Block



11586

- 11586**
14pc. full tang knife set with wood block
Includes the following:
scissor (1 pc.),
3 1/2" Paring knives (1 pc.),
4 1/2" Paring knife (1 pc.),
8" Cook knife (1 pc.),
6" Boning knife (1 pc.),
8" Serrated (bread) slicer knife (1pc.),
8" Slicer (carving) knife (1pc.),
8" Round sharpening steel (1 pc.),
4 1/2" Serrated table steak knives (6 pcs.)

PROFESSIONAL GRADE
PREMIUM QUALITY STAINLESS




12880

Paring Knife Set

- | | |
|--------------|---|
| 12879 | 4" Paring Knives, 24/Retail Box-All Black |
| 12880 | 4" Paring Knives, 24/Retail Box-Assorted colors |

12879

Hotel Paring Knife Set

- | | |
|--------------|---|
| 12881 | 3 1/4" Hotel Paring Knives, 24/Retail Box-All Black |
| 12882 | 3 1/4" Hotel Paring Knives, 24/Retail Box-Assorted colors |

PROFESSIONAL GRADE
PREMIUM QUALITY STAINLESS



12881



12882

RETAIL KNIFE SETS (continued)



11560

Chef's Knife Set

Includes the following:

- 9" Round Sharpening Steel
- 7" Cleaver
- 6" Meat fork
- 6" Straight Boning Knife
- 3 1/2" Paring Knife
- 5" Paring Knife
- 8 1/2" Serrated slicer knife
- 9 1/2" Cook Knife
- 7 1/2" Carving Slicer
- 9 1/2" Carving Slicer
- 3" Scissors
- 5" Utility Kitchen Shears

11560

Chef's knife set with briefcase

Forged Knife Set

11561

Includes the following:

- 4 1/4" Paring Knife (853488)
- 6" Boning Knife (840388)
- 6" Meat Fork (865688)
- 8" Cook Knife (843388)
- 9" Wave edge (856688)
- 10" Cook Knife (843688)



11561



11561

Forged knife set-6 pcs.



11548

11548 Table steak knife, narrow blade, rounded tip, plastic handle, 12pcs./pkg



11551

11551 Table steak knife, narrow blade, pointed tip, plastic handle, 12pcs./pkg



11550

11550 Table steak knife, narrow blade, wood handle, 12pcs./pkg

PROFESSIONAL GRADE
PREMIUM QUALITY STAINLESS



Steak Knife Set



- Balance Comfort and Grip
- Solid Brass Rivets
- Polished Wood handle
- Dishwasher Safe
- Mirror Finish to Resist Stains
- Serrated Edge for Cutting Consistency

Pointed Tip



Rounded Tip



11549 Table steak knife, wood handle, rounded tip, 12pcs./standard set

12791 Table steak knife, wood handle, pointed tip, 6pcs./standard set

12885 Table steak knife, wood handle, rounded tip, 6pcs./retail box

12886 Table steak knife, wood handle, pointed tip, 6pcs./retail box

KNIFE STORAGE



12902	Stainless steel knife rack, extra small, black insert, Overall Dimensions: 6"W x 2.5"L x 12.25"H
12904	Stainless steel medium knife rack with black insert hold, Overall Dimensions: 19"W x 5"L x 15"H
12905	Stainless steel large knife rack with black insert hold, Overall Dimensions: 23.25"W x 1.75"L x 12.5"H
12906	Double stainless steel knife rack with black insert. Holds 20 knives and 4 sharpening steels, Overall Dimensions: 24"W x 2.5"L x 12.5"H



Knife rack

Holds 12 knives, 1 cleaver, and 1 sharpening steel
Overall Dimensions: 12.5"W x 3.5"L x 16"H

11540	Plastic knife rack - black
11541	Plastic knife rack - blue
11542	Plastic knife rack - green
11543	Plastic knife rack - red
11544	Plastic knife rack - yellow
11545	Plastic knife rack - gray
11546	Plastic knife rack - tan



(inserts can be sold separate)

Knife rack

Holds 10 knives and 2 sharpening steels
Overall Dimensions: 12"W x 2.5"L x 12.5"H

12903	SS knife rack w/ plastic insert -black
12926	SS knife rack w/ plastic insert - blue
12928	SS knife rack w/ plastic insert - green
12931	SS knife rack w/ plastic insert - red
12937	SS knife rack w/ plastic insert - yellow
12933	SS knife rack w/ plastic insert - tan
12935	SS knife rack w/ plastic insert - white



Scabbards

12907	Scabbard "A". Holds two 7-inch knives
12908	Scabbard "B". Holds one 7-inch and one 12-inch knives
12909	Scabbard "C". Holds three 7-inch knives

KNIFE STORAGE (continued)

12912



Knife Bag

12912 Knife bag, nylon

11562



Knife Block

11562 Wooden knife block. Holds 7 knives and 1 steel.

Knife Box

- Made of red durable plastic
- Holds up to 20 knives
- Can fit knives up to 14"
- Easy to clean

12913



12913 Knife box, red with lid, 19" x 6.75" x 2.75"



Magnetic Knife Bar

- | | |
|-------|-------------------------|
| 12942 | Magnetic knife bar, 13" |
| 12943 | Magnetic knife bar, 15" |
| 12944 | Magnetic knife bar, 22" |

KNIFE SANITIZER

17039

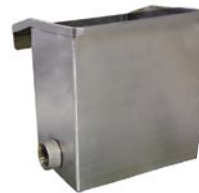


17039 Knife Sanitizer for 6" knives - complete set

17040 Knife Sanitizer for 12" knives - complete set

13573

13574



10106



13574 CS6 Knife Sanitizer for 6" knives - box only

13573 CS12 Knife Sanitizer for 12" knives - box only

10106 Immersion heater model 305, 115V

KNIFE SHARPENING PRODUCTS

10996



Model KS6 Knife Sharpener

The Model KS6 blade sharpener will sharpen most type of knives or cutting tools. Equipped with two grinding wheels. Suitable for butchers, catering operations, and restaurants.

10996 Knife Sharpening Machine, Weight: 9 lbs.
Overall Dimensions: 8.25" x 8" x 6.18"

(knives sold separately)

KNIFE SHARPENING PRODUCTS (conitnued)

10968



10968 | CSS-8 Chinese Combo Stone Medium and Fine

NORTON

Norton Sharpening Stones are made of the highest quality materials and are unequaled for long sharpening life, maintenance of shape and smooth cut.

10969



10971



10974



10970



10972



10975



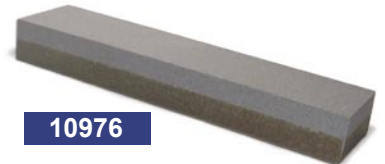
10977



10973



10976



10978

To obtain the best results always lubricate your stone with Norton Sharpening Stone Oil.



10969	Norton Sharpening Stone, JD2 Crystolon Utility File
10970	Norton Sharpening Stone, JUM3 Coarse Crystolon Combination Giant Bench Stone
10971	Norton Sharpening Stone, JM3 Coarse Crystolon
10972	IB8 Combo Stone, Crystolon Coarse/Fine
10973	JB8 Combo Stone, India Coarse/Fine
10974	Norton Sharpening Stone, JM6 Medium Crystolon
10975	Norton Sharpening Stone, IM9 Fine India
10976	Aluminum Oxide Quick Cut Bench Combination
10978	Oil for stones, 16 oz (1 pint)
10977	IM313 Norton Multi-Oil Stones

10967



10994



10995



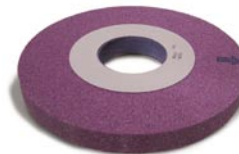
10986

10989

10998

11000

10984



10967	Grinding wheel, 36" x 2" x 12"
10998	Grinding wheel, 10" x 1" x 3", Purple
11000	Grinding wheel, 6.5" x 1" x 3", White
10994	Honing stone # 180 Grit Narrow
10995	Honing stone # 180 Grit Wide
10986	6" Cup wheels, 2 pc/set (54 Grit)
10989	8" Cup wheels, 2 pc/set (46 Grit)
10984	Pieco Stone -For machine plate sharpening 8" x 4" x 3 5/16"

KNIFE SHARPENING PRODUCTS (continued)



10993



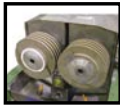
16877



10712



17041



- 10993 Honing Machine 220V/60Hz
- 16877 Hollow Grinder Machine
- 17041 8-inch cup wheel Hollow Grinding Machine - all stainless steel
- 17012 Wave Edge Machine

DIAMOND DRESSERS



17047

- 17047 Diamond Dresser



17048

- 17048 Diamond Tip Dresser

KNIFE ACCESSORIES

STAINLESS STEEL MESH GLOVES

Each corrosion-resistant stainless steel ring is individually welded to provide a high level of protection for cutting operations. Ergonomically designed for optimal fit and comfort.



- 13562 5 finger with wrist strap, Size XXS
- 13560 5 finger with wrist strap, Size XS
- 13558 5 finger with wrist strap, Size S
- 13557 5 finger with wrist strap, Size M
- 13556 5 finger with wrist strap, Size L
- 13559 5 finger with wrist strap, Size XL
- 13561 5 finger with wrist strap, Size XXL



10459



10460

10461



14205



14252



14145



16583



17045



14144

- 10459 Meat scraper, polyethylene, square
- 10460 Meat scraper, stainless steel, square
- 10461 Meat scraper, stainless steel, round
- 14205 6" Dough scraper
- 14252 Hamburger scoop, polyethylene construction
- 14145 12 1/2" Fork wood handle
- 17045 10" Spatula
- 14144 Pan scraper
- 16583 Fish scaler

KNIFE ACCESSORIES (continued)



Meat Cutlet Pounder



14265

10474	800g Cutlet pounder
10475	1000g Cutlet pounder
10476	1500g Cutlet pounder
10477	2000g Cutlet pounder
10478	2500g Cutlet pounder
14265	Sausage casing perforator

INDEX

A

Accessories..... 12-13

B

Boning knives..... 2
 Breaking knives..... 3
 Butcher knives..... 4

C

Carving Knives..... 3
 Cheese knife..... 5
 Clam knife..... 1
 Cleavers..... 2
 Cook knives..... 2
 Cup wheels..... 11
 Cut-off knives..... 4

D

Diamond Dressers..... 12
 Dough scrapers..... 12

F

Fillet knife..... 1
 Fish scalers..... 12
 Fish splitter..... 1
 Forged knives..... 6, 8
 Fork wood handle..... 12

G

Gloves..... 12
 Grinding wheels..... 11

H

Hamburgers scoop..... 12
 Hollow grinder machine..... 12
 Honing machine..... 12
 Honing wheels..... 11

K

Knife bag..... 10
 Knife box..... 10
 Knife racks..... 9
 Knife sets 7-8

M

Magnetic bar..... 10
 Meat cutlet pounder..... 13
 Meat scrapers..... 12
 Multi-purpose knife..... 5
 Multi-purpose oil..... 11

O

Oyster knife..... 1

P

Pan scrapers..... 12
 Paring Knives..... 5, 7
 Pieco stone..... 11
 Pziza rocker..... 4

Pizza knife..... 5
 Poultry knife..... 6
 Poultry splitter..... 6

S

Sanitizer..... 10
 Sausage casing perforator... 13
 Scabbards..... 9
 Seafood knives..... 1
 Sharpener..... 10
 Sharpening steels..... 6
 Skinning knife..... 5
 Slicers..... 3
 Spatula..... 12
 Specialty knives..... 5
 Steak knives..... 4
 Stones..... 11

T

Table steak knives..... 8

W

Watermelon knife..... 5
 Wave edge machine..... 12