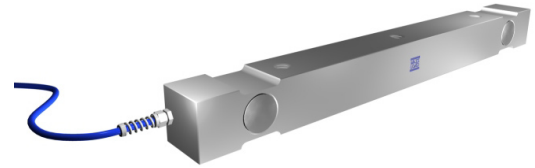


## Axle Pad Scale

If high accuracy, dependable axle weighing is what you're looking for, look no further than Massload's Axle Pad Scale. This scale can be used as an above ground, or pit installed axle scale depending on your application. It uses our tried and true ML1100 double-ended shearbeam loadcell that is environmentally sealed. You can be assured of accurate and reliable weighing in temperatures from -40°C to +57°C.



### Low Maintenance & Built To Last!



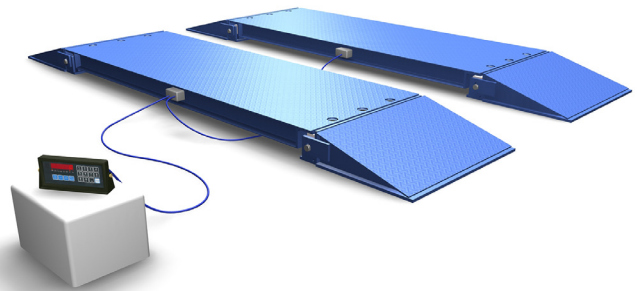
Massload Axle Pad Scales are fully electronic. There are no moving parts to wear out or adjust. Weight is measured using our precision machined, high strength load cells located within the platforms. They are environmentally sealed and virtually indestructible, ensuring years of trouble free operation. The platforms are constructed of heavy-duty structural steel to stand up to heavy, repeated use.

Be assured of reliable, worry free weighing with these quality weighpads.

### Models Available:

- 30" x 30" x 6" active weighing surface, 30,000lb capacity per pad.
- 84" x 30" x 6" active weighing surface, 30,000lb capacity per pad.
- 144" x 30" x 6" active weighing surface, 40,000lb capacity per pad.

On/Off ramps are optional.



### Features:

- Low Profile (6")
- Durable, no slip checker plate decking.
- Heavy duty high strength steel construction.
- Your choice of finish.

### System Specifications:

- Static Accuracy: 0.25% full scale or better
- Safe Overload Capacity: 150% full scale
- Stability: 0.5% full scale/year

### ML1100 Loadcell Specifications

Capacity .....	25,000 lb
Full Scale Output.....	2mv/V @ 25,000 lbs.
Maximum Excitation .....	15 VDC
Non-Linearity .....	<0.03% FS
Hysteresis.....	<0.02% FS
Non-Repeatability.....	<0.01% FS
Thermal Sensitivity Shift.....	0.0008% of reading/°F
Thermal Zero Shift.....	0.0015% FS/°F
Barometric Effect.....	NIL
Bridge Resistance .....	700Ω
Operating Temp Range .....	-50°C to +80°C
Compensated Temp Range.....	-10°C to +40°C



[www.thescaleshop.net](http://www.thescaleshop.net)

1-888-844-2031