

THE LARGEST MANUFACTURER OF VACUUM
PACKAGING MACHINERY IN NORTH AMERICA



THERMOFORMING MACHINES

TM-150
TM-250
TM-540

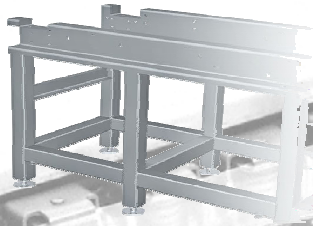


www.thescaleshop.net

1-888-844-2031

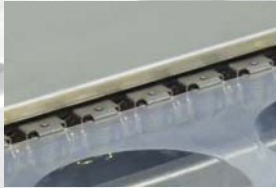


WITH SIPROMAC WIDE RANGE OF OPTIONS, WE ARE ABLE TO MAXIMIZE PRODUCTIVITY TO FIT CUSTOMERS' NEEDS



• LIFETIME WARRANTY ON FRAME

- Hygienically designed for today's sanitation needs
- Completely welded stainless steel construction
- Heavy duty 3"x 3" tubing



• HEAVY DUTY 5/8" CHAIN

- For high speed and longer durability
- Large chain gripper to allow wider tolerances for film variances



• 10" TOUCH SCREEN CONTROL PANEL

- Operator friendly
- Fast speed trouble shooting and self diagnostic
- Multiple language option
- Preset vacuum levels to maximize proper evacuation
- "TELEMECANIQUE/SQUARE D" PLC and components
- Servo drive for precision advance
- Ethernet monitoring capability



• HEAD SLIDING TRACKS

- Easy access of die dividers

SIPROMAC THERMOFORMING MACHINES

	TM-150	TM-250	TM-540
Web widths	320 mm / 420 mm	420 mm / 520 mm	Up to 620 mm
Maximum cut-off length	340 mm	500 mm	620mm
Forming depth	120 mm std, 150 mm opt.	120 mm std, 150 mm opt.	120 mm std, 150 mm opt.
Dancer roll	Not available	Standard	Standard
Core diameter	3"	3" std., 6" opt.	6" std.
Vacuum pump	100 m3/hr built-in	Up to 255 m3/hr built-in	Booster built-in
Film	Flexible / Semi-rigid / Rigid		
Gas flush capability	Available		
Forming possibilities	Vacuum, compressed air, plug assist, pre-heating		
Sealing possibilities	Total seal, perimeter seal		
Cutting possibilities	Rotary knife, squeezing knife, shear cutting, zigzag cutting, guillotine, round corner punching, shaped cutting		
Options	Discharge conveyor, reciprocal ink coder, ink jet printing, thermal transfer coding, photocell for pre-printed film, trim removal canister, rewinder type trim removal, automatic chain oiler, labelling system, reclosable zipper application		