

BIRO

Our Equipment Works Harder So You Don't Have To

The Biro Model 3334-4003 Meat Saw is the saw of choice for high volume production of retail cuts such as porterhouse steaks and pork chops. Its extra large tables give you more room for heavy production, and the exclusive Biro EZ-Flow front carriage moves easily and smoothly to ease long hours of meat cutting and enhance safety. The 3 hp, (2.2 kW) motor provides all the power you need, and the 4000 feet (1219 meters) per minute cutting speed makes the blade cut through even dense beef bones with ease. The 3334-4003's stainless steel base, cast aluminum head, watertight magnetic switch, and totally enclosed motor stand up to heavy use and daily washdown, so you get years of productivity out of your saw. Its heavy duty construction, including a tapered roller bearing drive system and stainless steel construction means fewer repairs and lower repair bills, both of which improve your bottom line. Day after day after day, the Biro 3334-4003 Meat Saw works harder so you don't have to.



333455-4003



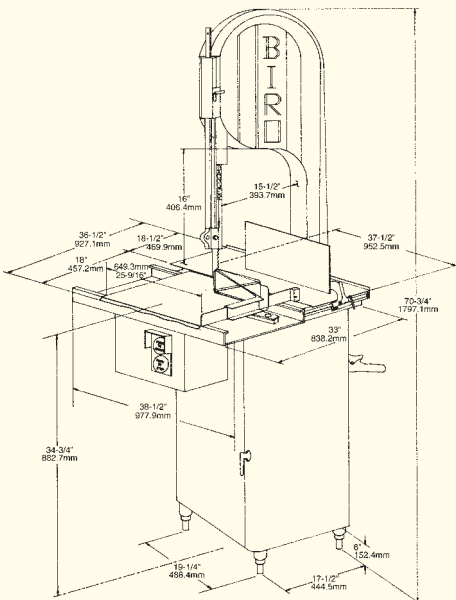
***Stands Alone For Quality
and Value Since 1921***

SPECIFICATIONS

- MODEL** 3334SS-4003
- ELECTRICAL** 3 HP, (2.2 kW), 220 Volts, 60 Hz, 3 phase; 1 phase and 50 Hz optional (see table below)
- ELECTRICAL COMPONENTS** Totally enclosed high humidity motor, watertight magnetic switch system with thermal overload protection
- CONSTRUCTION** Heavy duty stainless steel base, legs, and tables with 25% larger front easy flow moving carriage. Cast aluminum head and door structure.
- DRIVE SYSTEM** Double V belt and pulleys with tapered roller bearings on drive shaft
- BLADE** Hard tooth .022 inch (.5 mm) thick, 3 teeth per inch (8.5 mm between teeth), 5/8 inch (16 mm) wide, 124 inches (3150 mm) long
- BLADE SPEED** 4000 feet (1219 m) per minute
- OPTIONS** (Extra cost) Cord and plug, double flange wheels, lower removable wheels, split rear platter, stainless steel head
- OPTIONS** (No Charge) Narrow blade guides (.018 inch/.46 mm), 5000 (1524m) and 6000 (1829m) feet per minute blade speed
- CERTIFICATIONS** USDA, UL, NSF, CSA
- WEIGHT** Uncrated 510 pounds (231 kg) approximate
Crated 575 pounds (261 kg) approximate

MOTORS

HP	TYPE	VOLTS	AMPS	CYCLE	PH	STATUS
3	TE	220/440	8.6/4.3	60	3	STD
3	TE	380/415	4.3	50	3	STD
3	TE	208/230	14.0	60	1	EC
3	TE	220	12.5	50	1	EC
3	TE	550	3.6	60	3	EC



www.thescaleshop.net

1-888-844-2031