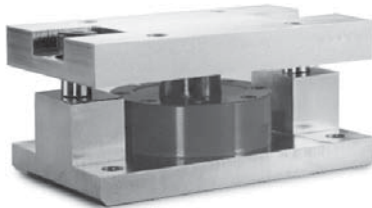


Available in configurations with three or four mounting assemblies.

Picture is a representation of actual product

The RL2200 Series mounts are ideal for use in tank, hopper, vessel, and many other applications. The low-profile design allows for economical solutions in a competitive marketplace. This rugged, high-precision mount is designed for easy installation and does not require check rods or other stabilizing hardware. The RL2200 mount has the added feature of self centering, allowing for side loads without sacrificing performance.

Assembly with integral RL2200 compression disk load cell.



COMPLETE KIT INCLUDES:

- 1 JB4SS NEMA 4X stainless steel signal trim junction box
- 3 or 4 RL2200 high-alloy, zinc-plated steel mounting assemblies
- 3 or 4 RL2200 compression disk load cells
- 25' of our Hostile Environment EL147HE SURVIVOR® load cell cable

APPLICATIONS:

- Tank, hopper or vessel weighing
- Belt or roller conveyors
- Scale platforms and screw feeders

STANDARD FEATURES:

- Capacities: 2500-50,000 lb (1134-22,680 kg)
- Low-profile design
- High 4 mV/V output (2 mV/V, 2500 lb)
- Self-centering in all directions—able to withstand excessive side loads
- Self-checking assembly

LOAD CELL SPECIFICATIONS:

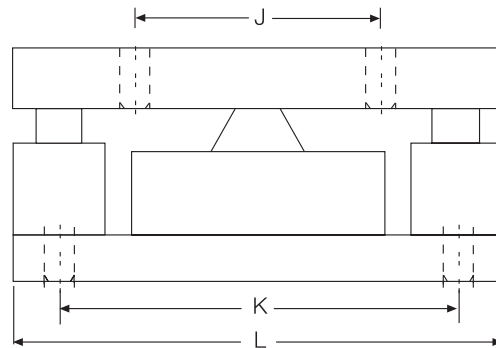
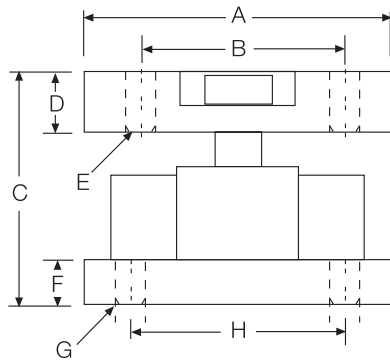
Full Scale Output:	4.0 mV/V, 2.0 mV/V (2500 lb)
Bridge Resistance:	350 ohms nominal
Material/Finish:	High-alloy steel, painted
Safe Overload:	150% Full Scale
Rated Excitation:	10 VDC (20 V maximum)
Nonlinearity:	0.05% Full Scale
Hysteresis:	0.03% Full Scale
Temperature:	Compensated range: 15°F to 115°F/-9°C to 46°C
Insulation Resistance:	5000 megohms
Seal Type:	Environmentally sealed
*Cable Length:	30'/9.1 m
Cable Color Code:	Red..... + Excitation Black..... - Excitation White..... + Signal Green - Signal
Warranty:	Two-year limited warranty

*Compression load application

RL2200 Series Specifications

DIMENSIONS

Rated Capacity	A	B	C	D	E	F	G	H	I	J	K
lb/inches											
2500-10,000	5.0	3.50	4.00	1.00	.52	1.0	.52	3.50	4.00	6.50	8.0
25,000-50,000	6.0	4.50	5.00	1.25	.78	1.0	.78	4.50	5.00	7.75	10.0
kg/mm											
1134-4536	127.0	88.9	101.6	25.4	13.2	19.0	13.2	88.9	101.6	165.1	203.2
11,340-22,679.6	152.4	114.3	127.0	31.7	19.8	25.4	19.8	114.3	127.0	196.8	254.0



RL2200 Series Order Information

Load Rating		Part #	Price
Single Module			
2500 lb	(1134 kg)	76656	Consult
5000 lb	(2268 kg)	45849	Consult
10,000 lb	(4536 kg)	45848	Consult
25,000 lb	(11,340 kg)	45847	Consult
50,000 lb	(22,680 kg)	45846	Consult
3-Module Kit			
2500 lb	(1134 kg)	76897	Consult
5000 lb	(2268 kg)	42811	Consult
10,000 lb	(4536 kg)	42812	Consult
25,000 lb	(11,340 kg)	42813	Consult
50,000 lb	(22,680 kg)	42814	Consult
4-Module Kit			
2500 lb	(1134 kg)	76898	Consult
5000 lb	(2268 kg)	42815	Consult
10,000 lb	(4536 kg)	42816	Consult
25,000 lb	(11,340 kg)	42817	Consult
50,000 lb	(22,680 kg)	42818	Consult

RL2200 Series Replacement Load Cell Order Information

Load Rating		Part #	Price
2500 lb	(1134 kg)	76654	Consult
5000 lb	(2268 kg)	45708	Consult
10,000 lb	(4536 kg)	45709	Consult
25,000 lb	(11,340 kg)	45710	Consult
50,000 lb	(22,680 kg)	45711	Consult