

Monorail Scales

MS200 & MS202

Portable & Permanent Monorail Scales



STANDARD FEATURES

- 8 in long live rail designed to weigh one trolley at a time
- 750 lb x .5lb resolution in both portable and permanent models
- Available for rail sizes 3/8 in x 2 1/2 in or 1/2 in x 2 1/2 in
- Requires less than 41 inches of straight rail to install (14 in between rail hangers for permanent model)
- Zinc-plated, steel construction
- High accuracy, stainless steel load cell
- 25 ft of load cell cable for flexible installation
- Slightly recessed live rail for the trolley roller provides stable weighments

APPROVALS



SPECIFICATIONS

MS200/MS202 CONSTRUCTION:

Zinc-plated steel construction, stainless steel hardware

LOAD CELL CONSTRUCTION:

Stainless steel

EXCITATION:

10VD

BRIDGE RESISTANCE:

350 ohms nominal

RATED OUTPUT:

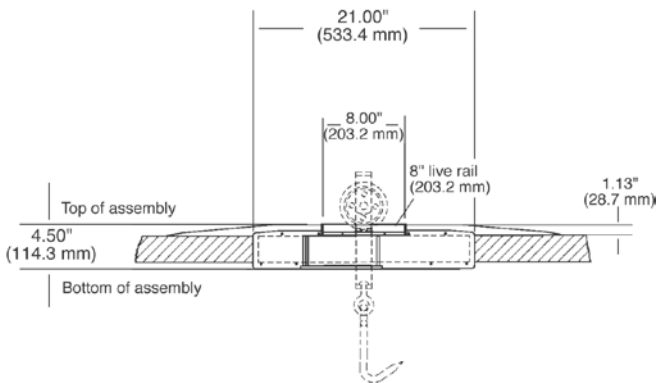
2 mV/V

NONLINEARITY:

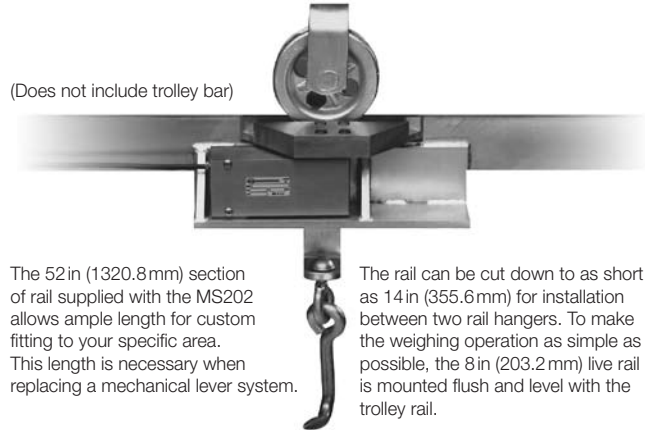
0.03% full scale

Monorail Scales

MS200/MS202 DIMENSIONS



MS202 PERMANENT MONORAIL SCALE



The 52 in (1320.8 mm) section of rail supplied with the MS202 allows ample length for custom fitting to your specific area. This length is necessary when replacing a mechanical lever system.

The rail can be cut down to as short as 14 in (355.6 mm) for installation between two rail hangers. To make the weighing operation as simple as possible, the 8 in (203.2 mm) live rail is mounted flush and level with the trolley rail.

PART # DESCRIPTION

PART #	DESCRIPTION	EST. SHIP WEIGHT	PRICE
19743*	MS200HB, NTEP Certified portable	38 lb	Consult factory
19744*	MS202HB-3/8 in, NTEP Certified permanent	38 lb	Consult factory
19745*	MS202HB-1/2 in, NTEP Certified permanent	38 lb	Consult factory

*Scale only, indicator not included.

OPTIONS/ACCESSORIES

16984	Additional operating manual	Consult factory
N/A	2 scales installed and connected to one indicator	Consult factory

NOTE: If scale is not going to be moved to different locations, the MS-202 permanent model is recommended for easier transfer of the load.