



# RL1010 Potted and Unpotted Single Point, Aluminum

NTEP 1:5000 Class III Single Cell



Picture is a representation of actual product

## SPECIFICATIONS:

<b>Full Scale Output:</b>	2.0 mV/V
<b>Bridge Resistance:</b>	350 ohms, nominal
<b>Material/Finish:</b>	Anodized aluminum
<b>Temperature:</b>	Compensated range 14°F to 104°F/-10°C to 40°C
<b>Safe Overload:</b>	200% at center of loading point, full scale
<b>Rated Excitation:</b>	10V DC (15V maximum)
<b>Total Error:</b>	.02% Full scale
<b>Insulation Resistance:</b>	5000 megohms
<b>Deflection at Capacity:</b>	3-90 kg ≤ .4 mm/.015"
<b>Seal Type:</b>	Potted & unpotted models available
<b>Cable Length:</b>	Potted 3.1 m/10', unpotted 0.9 m/3'
<b>cCable Diameter:</b>	.200/PVC jacket
<b>Cable Color Code:</b>	Green ..... + Excitation Black ..... - Excitation Blue ..... + Sense Brown ..... - Sense Red ..... + Signal White ..... - Signal
<b>Max Platform Size:</b>	15.75" x 15.75"
<b>Warranty:</b>	Two-year limited warranty
<b>Approvals:</b>	 

## DIMENSIONS

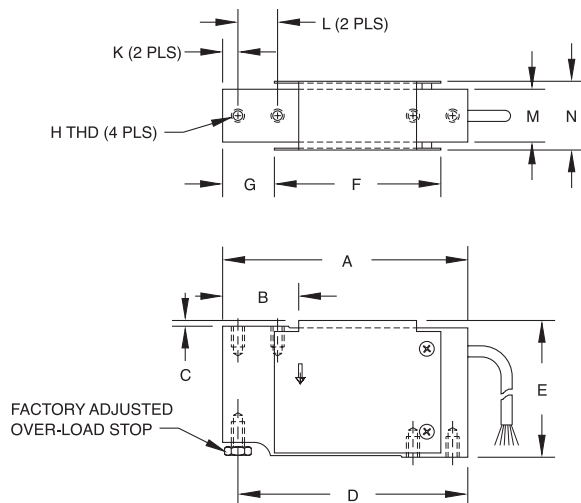
Rated Capacity	A	B	C	D	E	F	G	H	K	L	M	N
<b>kg/mm</b>												
3-90	118.1	34.0	3.0	110.5	66.0	80.0	25.0	1/4-20 UNC X 13 DP	7.5	19.1	25.4	33.5
<b>lb/inches</b>												
6.6-198.4	4.65	1.34	.12	4.35	2.60	3.15	.98	1/4-20 UNC X 0.50 DP	.30	.75	1.00	1.32

## RL1010 Order Information

Load Rating	Part #	Price
<b>Non-NTEP, Potted</b>		
7 kg (15.4 lb)	17529	Consult
10 kg (22.1 lb)	17530	Consult
15 kg (33.1 lb)	17531	Consult
20 kg (44.1 lb)	17532	Consult
30 kg (66.1 lb)	17533	Consult
50 kg (110.2 lb)	17534	Consult
90 kg (198.4 lb)	17535	Consult
<b>Non-NTEP, Unpotted</b>		
3 kg (6.6 lb)	17527	Consult
5 kg (11.0 lb)	17528	Consult
<b>NTEP 1:5000, Potted</b>		
10 kg (22.1 lb)	50819	Consult
15 kg (33.1 lb)	50820	Consult
20 kg (44.1 lb)	50821	Consult
30 kg (66.1 lb)	50822	Consult
50 kg (110.2 lb)	50823	Consult

## Interchangeable Products

Manufacturer	Model	Page #
Vishay Tedea-Huntleigh	1010	325



www.thescaleshop.net

1-888-844-2031