

# wheelchair scales

model 340-10-4



model 340-10-8



model RL-350-2

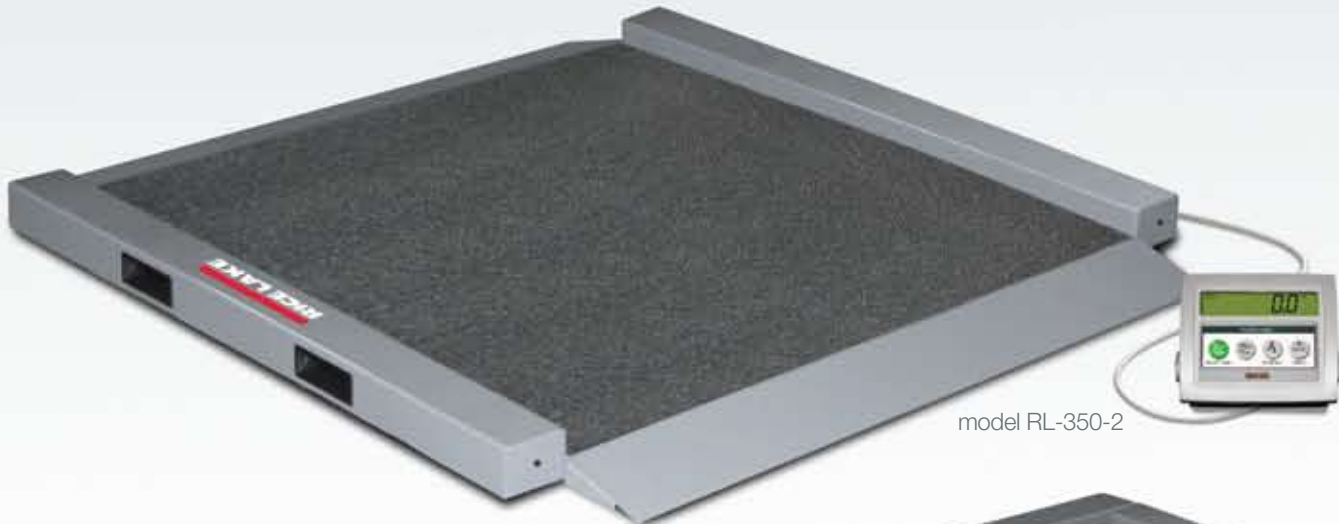


**RICE LAKE**<sup>®</sup>  
HEALTH SOLUTIONS

To be the best by every measure<sup>®</sup>

# Rice Lake **wheelchair** scales

RICE LAKE offers a full lineup of wheelchair scales from single ramp to dual ramp with chair. Each model is designed and built to weigh accurately, safely and dependably. Motiontrap™ adjusts for involuntary movement. Keyboard tare and reweigh features efficiently reduce errors and patient transfers. Sleek designs make these scales easy to move, maintain and store.



model RL-350-2

## Model RL-350 Series Standard Features



- Capacity: 1000lb x 0.2lb (450kg x 0.1kg)
- Platform weighing dimensions: 34 in x 34 in
- Anti-slip rubber surface on platform
- Built-in handles and wheels for ease of portability
- Motiontrap (movement compensation technology)
- Large 1 inch LCD display
- Ability to manually enter the tare weight of a wheelchair
- Reweigh function
- Hold function
- AC adaptor and internal rechargeable battery
- BMI (body mass index) function
- Unit of measure: lb only, kg only, lb/kg
- EMR ready with RS-232 port
- Updatable firmware
- 10ft cable between scale base and indicator

### RL-350-1

- Single ramp

### RL-350-2

- Dual ramp

<b>Capacity</b>	1000lb (450kg)
<b>Graduations</b>	0.2lb (0.1kg)



model RL-350-1



Indicator and cable secure to base for safer movement and storage.



**Model 340 Series**  
Standard Features



- Capacity: 1000 lb x 0.2 lb (450 kg x 0.1 kg)
- Platform weighing dimensions: 29.5 in x 32 in
- Two wheels for ease of portability
- Motiontrap (movement compensation technology)
- Large 1 inch LCD display
- Ability to manually enter the tare weight of a wheelchair
- AC adaptor and internal rechargeable battery
- BMI (body mass index) function
- Reweigh function
- Hold function
- Unit of measure: lb only, kg only, lb/kg
- Non-skid platform
- EMR ready with RS-232 port
- Updatable firmware

<b>Capacity</b>	1000 lb (450 kg)
<b>Graduations</b>	0.2 lb (0.1 kg)

**Single Ramp Platform (Model 340-10-7)**

- 6.5 ft cable between scale base and indicator
- Single ramp for on/off access

**Single Ramp Handrail (Model 340-10-2)**

- Single ramp for on/off access

**Dual Ramp Platform (Model 340-10-8)**

- 6.5 ft cable between scale base and indicator
- Dual ramp

**Dual Ramp Handrail (Model 340-10-3)**

- Includes padded, fold away chair with back rest
- Dual ramp

**Dual Ramp Handrail with Seat (Model 340-10-4)**

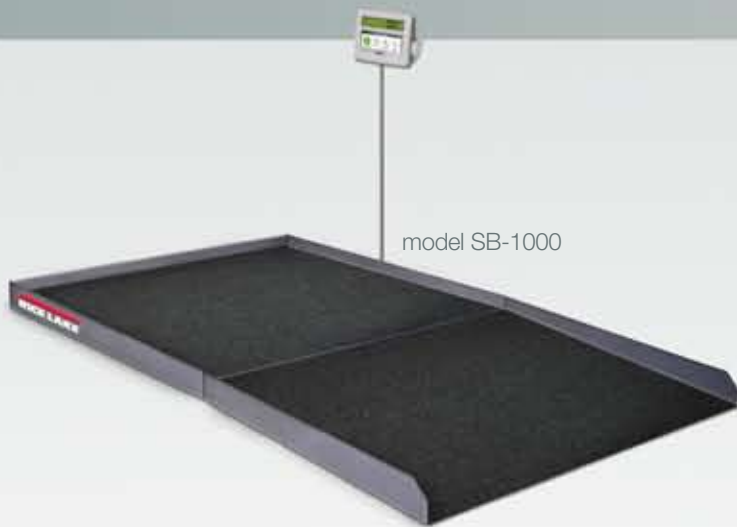
- Includes padded, fold away chair with back rest
- Dual ramp

*Model 340-10-4 has a padded seat that easily tucks away as shown below, allowing for dual function as both a wheelchair and chair-scale device.*

model 340-10-4



# Rice Lake **wheelchair** scales



model SB-1000

<b>Capacity</b>	1000lb (450kg)
<b>Graduations</b>	0.2lb (0.1 kg)

THE HEAVY-DUTY SB-1000 BARIATRIC SCALE easily accommodates wheelchairs with its large platform size and easy access ramp. To maximize safety, the scale and ramp are equipped with a non-skid rubber surface and guide rails on the sides.

The Summit® Bariatric Scale provides exceptional performance in applications where typical wheelchair scales are not large enough to meet the needs of patients.

## **Bariatric/Wheelchair Scale SB-1000**

### Standard Features

- 36 in W x 36 in L - 1,000lb mild steel painted scale with anti-slip rubber surface and three-sided safety rails
- Access ramp 36 in W x 28.5 in L with anti-slip rubber surface
- Motiontrap (movement compensation technology)
- Large 1 inch liquid crystal display (LCD)
- AC adaptor and internal rechargeable battery
- Pushbutton or manual entry of tare weight
- Unit of measure: lb only, kg only, lb/kg
- 10ft interface cable from scale to indicator
- RS-232 port
- BMI (body mass index) function
- Reweigh function
- Hold function



model SD-1000

<b>Capacity</b>	1000lb (450kg)
<b>Graduations</b>	0.2lb (0.1 kg)

*This model is often mounted flush with the floor when purchased with an optional pit frame kit.*

THE SD-1000 DIALYSIS WHEELCHAIR SCALE is ideal for dialysis clinics. Large 36 in x 36 in 1,000lb mild steel platform easily accommodates dialysis chairs. Features include anti-slip rubber surface, movement compensation technology, push button or manual tare weight entry, reweigh and hold function.

## **Dialysis Scale SD-1000**

### Standard Features

- 36 in W x 36 in L - 1,000lb mild steel painted scale with anti-slip rubber surface
- 36 in (H) x 30 in (L) handrail and mounting hardware
- Motiontrap (movement compensation technology)
- Large 1 inch liquid crystal display (LCD)
- AC adaptor and internal rechargeable battery
- Pushbutton or manual entry of tare weight
- Unit of measure: lb only, kg only, lb/kg
- 10ft interface cable from scale to indicator
- RS-232 port
- BMI (body mass index) function
- Reweigh function
- Hold function