

CAPACITY	RESOLUTION**	A*	B*	C*	D*	E*	F	HOOK	EYE NUT OR SHACKLE	APPROX. SHIP WT.
500 lb	0.2 lb	18.3 in	2.25	3.06	1.44	1.41	-	5 ton alloy	CR # 7	53 lb
250 kg	0.1 kg	465 mm	57.1	77.7	37.0	36.0	-	swivel	eye nut	24 kg
2,000 lb	1 lb	18.3 in	2.25	3.06	1.44	1.41	-	5 ton alloy	CR # 7	53 lb
1,000 kg	0.5 kg	465 mm	57.1	77.7	37.0	36.0	-	swivel	eye nut	24 kg
5,000 lb	1 lb	20.5 in	2.50	3.50	1.81	1.69	-	7 ton alloy	CR #8	62 lb
2,500 kg	0.5 kg	521 mm	64.0	89.0	46.0	42.9	-	swivel	eye nut	28 kg
10,000 lb	2 lb	20.5 in	2.50	3.50	1.81	1.69	-	7 ton alloy	CR # 8	62 lb
5,000 kg	1 kg	521 mm	64.0	89.0	46.0	42.9	-	swivel	eye nut	28 kg
20,000 lb	5 lb	28.5 in	4.00	6.25	2.62	2.41	-	15 ton alloy	CR # 11	105 lb
10,000 kg	2 kg	724 mm	101.6	159	66.5	61.2	-	swivel	eye nut	47 kg
30,000 lb	10 lb	30.0 in	4.00	6.25	3.00	3.19	-	22 ton alloy	CR # 11	125 lb
15,000 kg	5 kg	762 mm	101.6	159	76.2	81.0	-	swivel	eye nut	55 kg
50,000 lb	10 lb	41.0 in	5.00	6.00	3.62	3.63	15.0	30 ton alloy	CR 25 ton	235 lb
25,000 kg	5 kg	1041 mm	127	152	92.0	92.0	381	swivel***	shackle # 2130	106 kg
70,000 lb	20 lb	43.2 in	5.00	6.00	4.56	3.75	15.0	37 ton alloy	CR 40 ton	270 lb
35,000 kg	10 kg	1097 mm	127	152	116	95.0	381	swivel****	shackle # 2140	121 kg
100,000 lb	20 lb	52.1 in	5.75	6.65	5.06	4.25	16.25	CR 45 ton	CR 55 ton	420 lb
50,000 kg	10 kg	1324 mm	146	169	129	108	413	S1 swivel*****	shackle # 2140	189 kg

CONSULT FACTORY FOR HIGHER CAPACITIES — See MSI-9300HT Specification Sheet for applications that require powered rotation of lifted material. See also MSI-9300 Porta-Weigh Plus and MSI-6260CS for heavy duty applications requiring remote radio telemetry display and/or computer interface.

Specifications

Accuracy

Plus or minus 0.1% of applied load

Housing

- Alodined cast aluminum
- Double O-ring gasketed
- NEMA 4, IP66

Load Train

- Load Cell: 4340 aircraft quality steel
- Top Lifting Eye and/or Shackle: Crosby or equivalent
- Hook: Crosby thrust bearing swivel hook or equivalent
- Safe Overload: 200% of rated capacity
- Ultimate Overload: 500% of rated capacity (except as noted)

Display

- 6 digit, 40mm (1.6 in) high numeric LCD (upper)
- 8 digit, 20mm (0.8 in) high numeric LCD (lower)
- Adjustable display contrast

Filtering

Low, medium or high selectable

Units

Pounds, kilograms, tons or metric tons – switch selectable

Temperature

Operating: -10°C to 60°C (14°F to 140°F)

Power

12 volt rechargeable battery (includes 115-230 VAC, 50/60 Hz universal battery charger)

Operating Time

Maximum 100 - 300 hours (operating time will vary with on/off duty cycle and with use of backlight)

Standard Function Switches

POWER: Turns unit "On" or "Off"

ZERO: Zeros applied load up to 100% of capacity unless prohibited by legal-for-trade settings

NET/GROSS: Switches display between NET and GROSS weight readings

TARE: Tares applied load and displays weight in NET mode

TEST: Provides on-demand functional tests

Optional 7 Key Configuration

Includes all of the above, plus:

TOTAL Σ: Accumulates weighments (automatically or manually)

VIEW: Displays current total value

SETUP: Menu of selectable operating parameters (includes Set Points)

CLEAR: Dispose of previously entered value

SELECT: Controls menu of selectable parameters

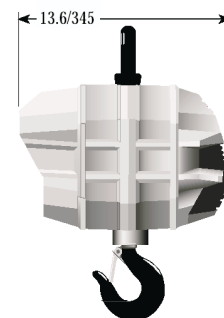
ENTER: Entry of numeric values and selectable operating parameters

PEAK HOLD: Captures and holds maximum load

TARE MEMORY: Stores up to 10 tare values

Options and Accessories

- 7 key configuration
- NTEP and OIML for use in commercial trade (contact factory for U.S. and International specifications Class III and IIIL)
- Substitute shackle for bottom swivel hook
- Oversized top and/or bottom shackle
- Oversized bottom swivel hook
- Low headroom adapter
- RS-232 data output
- Direct AC or DC power input
- Audible alarm
- IR Remote
- Alkaline battery power (see drawing below for alkaline battery option back casting)



Specifications subject to change without notice.

PUB.130-05-90F Printed in U.S.A.
 © 2004 by Measurement Systems International, Inc.