

# JCM Telemetry Dual Load Shackles (JCM 2000 ST)

---

## Ideal for Measurement Applications with Limited Headroom

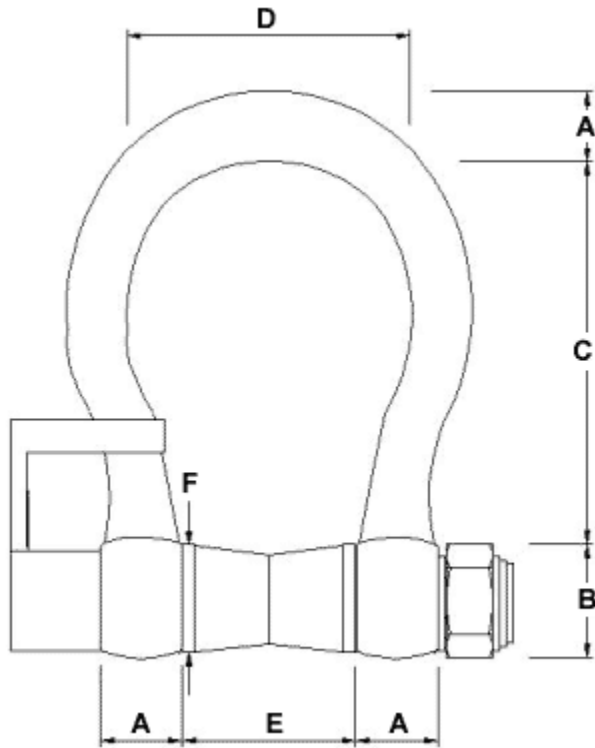
- *Telemetry Load Shackle*
- *JCM 2000 ST*
- *Capacities 25 Te to 1000 Te*



*End cap housing telemetry electronics and anti rotation bracket.*

- *Special load bobbin design*
- *Robust anti-rotation bracket*
- *IP66 sealing*
- *Ideal for reduced height load monitoring*
- *Re-chargeable or disposable battery power*
- *Traceable calibration*
- *Wireless 300m operation*
- *Eliminates possible cable damage*

**Dimensions:**



SWL TONNE	A mm	B mm	E mm	C mm	D mm	F mm	WEIGHT kgs
25	45	50	74	178	126	87	15
35	50	57	83	178	126	94	21
55	65	70	105	254	185	107	41
85	75	80	127	330	190	130	63
110	80	82	127	330	200	134	70
120	89	95	150	381	238		110
140	90	95	133	381	238		105
150	102	108	170	400	275	174	160
175	102	108	140	400	250		150
200	120	125	180	500	290	208	235
250	125	140	200	540	305	210	285
300	135	150	200	600	305	232	340
400	165	175	225	650	325	280	560
500	175	185	250	700	350		685
600	195	205	275	700	375		880
700	205	300	300	700	400		980
800	210	220	300	700	400		1100
900	220	230	320	700	420		1280
1000	230	240	340	700	420		1460

## Wiring Details:

*Red EX +*

*Blue EX –*

*Green Sig +*

*Yellow Sig –*

## Technical Data:

Standard Load Ranges	Tonne	25,35,55,85,110,120,140,150,175,200,250,300,400,500,600,700,800,900,1000	
Safe Service Load	%	150	
Ultimate Load	%	400	
Combined Error	%	+/-1 FSD	
Input Resistance	Ohms	700	
Output Resistance	Ohms	700	
Operational Temp. Range	°C	-10 to +50	
Environmental Protection		Ip.65	
Insulation	G Ohms	>5 at 100V D.C.	
<b>Cable Type:</b>			
Cable Connection		Sub con	
Cable Length		20-40m	
<b>Telemetry Type:</b>			
Range	Metres	200	



[www.thescaleshop.net](http://www.thescaleshop.net)

1-888-844-2031